

# Don't Wait and See Early Intervention is Key!

## When to refer to a Speech-Language Pathologist

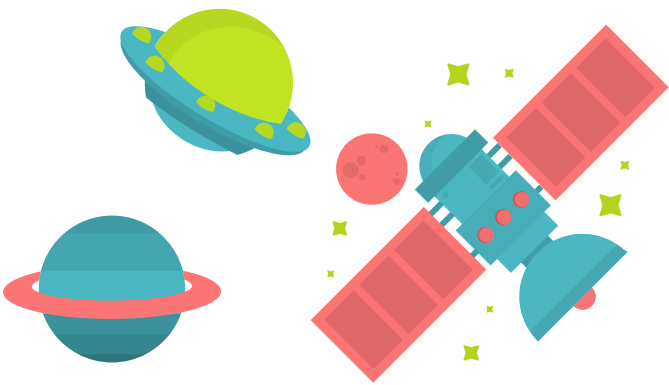
### Any Age

- Child has a hoarse voice or abnormal voice/resonance
- Child demonstrates inappropriate play or social skills



### 30 Months

- Saying fewer than 300 words
- Not using action words like "play", "jump"
- Not using *some* adult grammar, such as "two balls", "mommy sleeping", "my turn", "I do"
- Not understanding *a few* basic concepts such as concepts of size (big/little) and quantity (a little/a lot, more)
- Not taking turns or playing with peers
- Speech is unclear, even to familiar listeners



### 18 Months

- Not following simple commands (e.g., "Sit down", "Come here", "Put in")
- Not using a minimum of 20 words
- Not responding with a word or gesture to a question such as "What's that?" or "Where's your ball?"
- Not pointing to two or three body parts such as head, nose, eyes, feet
- Not using a variety of consonant sounds



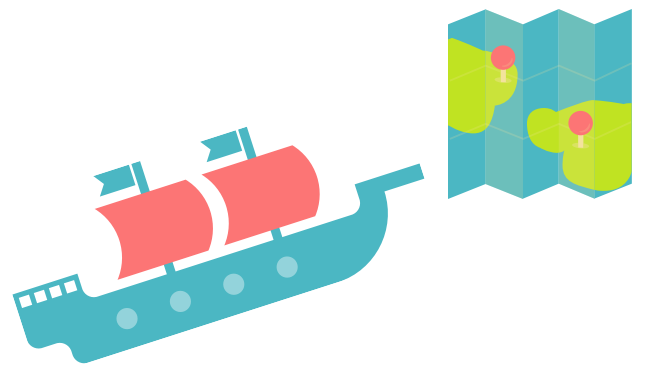
### 12 Months

- Not responding to her/his name
- Not babbling with a variety of sounds as if he/she is talking (e.g., "maabaagoo ooduh")
- Not using gestures like waving, reaching arms up
- Not communicating wants/needs



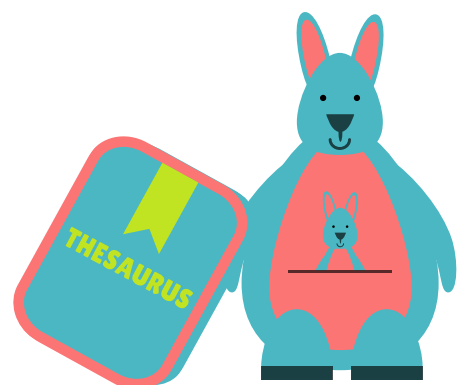
### 3-4 Years

- Not asking or answering questions (who, what, where)
- Not using complex sentences (e.g., "I don't like that" or "My doll is at home")
- Not able to tell a simple story or relate personal experiences
- Difficulty talking to/playing with peers
- Difficulty producing sounds/words (i.e. not producing p, b, m, t, d, n, w, h by age 3, k, g, f, s, z, y, s-blends by age 3;6-4)
- Child is repeating the first sound in words (m-m-mom), pausing frequently, or stretching out the sounds in words



### 24 Months

- Not saying a minimum of 100 words
- Not combining two words together (e.g., "more juice")
- Not imitating actions or words
- Not following 2 step commands
- Not engaging in pretend play with toys, such as feeding a doll or animating animal figures
- Has little or no interest in other children



### 15 Months

- Not saying any words
- Not responding to words like "come" and "no"
- Not pointing to objects or pictures in books
- Not showing objects or toys to caregivers



# AURORA SPEECH CLINIC

258 Earl Stewart Dr, Suite 4 | Aurora, ON | L4G 6V8  
auroraspeechclinic.ca | info@auroraspeechclinic.ca  
p: 905-503-4321 f: 905-503-4322

## Why is early intervention so important?

- **Communication is key:** Language is the foundation of a child's social, emotional and academic development.
- **The first 5 years are critical:** The earlier communication difficulties are identified, the better the outcomes of intervention.
- **Learning is cumulative:** Difficulties with early-acquired communication skills can hinder the development of more advanced speech, language and social skills.
- **Support for the whole family:** Early intervention provides opportunities for direct treatment, as well as caregiver education and guidance.
- **Lasting benefits:** Early intervention provides greater academic and social success later in life.

**! Did you know?** According to Speech-Language and Audiology Canada, an estimated 8-12% of Canadian preschool children have a language impairment

## How do I make a referral?

### Medical Professionals

We appreciate your referrals and want to make the process as easy as possible! Please utilize any of the following options:

- Provide families with our contact information and they can call us directly! (A doctor's referral is not necessary to obtain SLP services but may be required by the patient's insurance company for reimbursement)
- Use your existing EMR template and fax the referral, with patient's contact information and areas of concern, to 905-503-4322.
- Call us and we will follow up with families.

### Educators or other Professionals

- Provide families with our contact/website information and they can contact us directly!

### Families

- Please call, email, or pop in and see us!

*Please note, the York Region Preschool Speech and Language Program (YRPSLP), funded by the Ontario Ministry of Children and Youth Services, provides free services for children from birth to Junior Kindergarten entry. Call the York Region Kids Line at 1-888-703-KIDS (5437) or visit their website for referral information:*

*<http://www.childdevelopmentprograms.ca/>*

*Because wait times vary and can be up to 9 months, per the website, many families choose to complement YRPSLP services with those offered at Aurora Speech Clinic. We would be delighted to collaborate with your child's YRP SLP to ensure best outcomes!*